

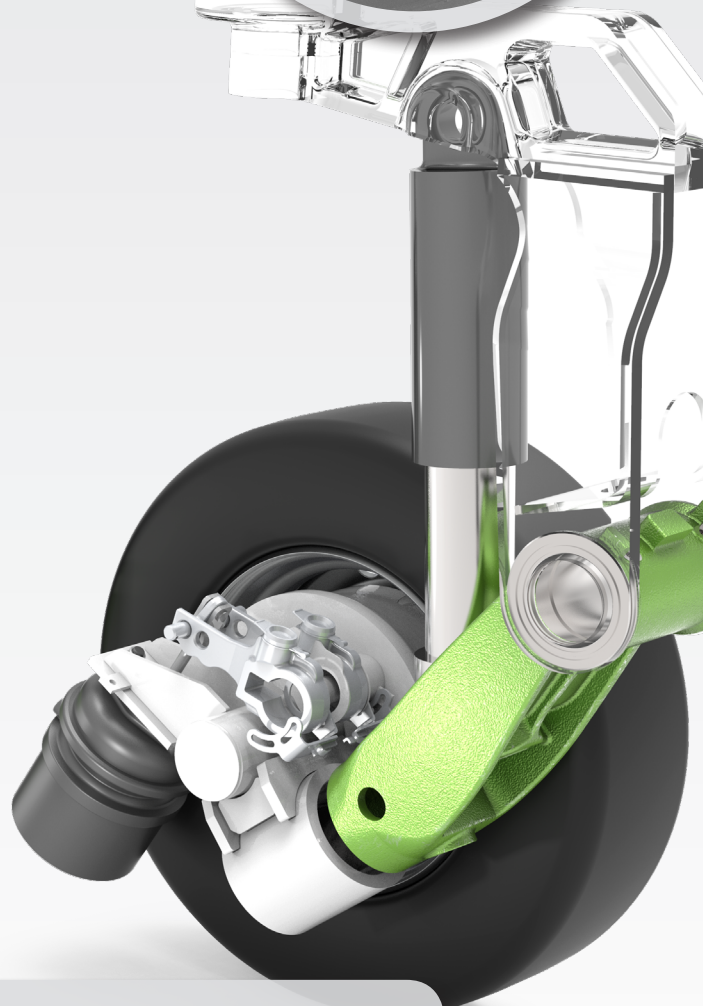
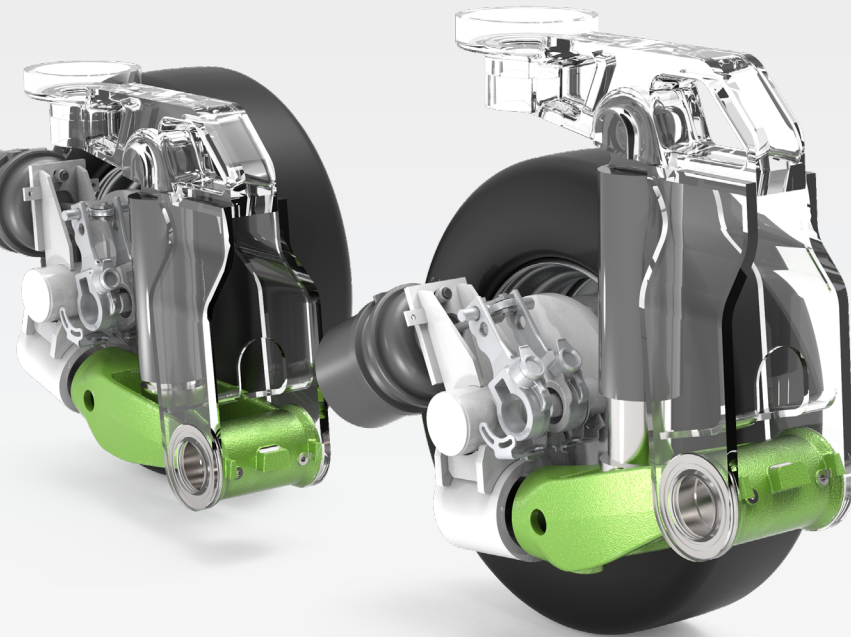
Rocker arm of a heavy duty semi-trailers

Development of an cost-effective ADI casting

Rough circumstances

This sub-assembly makes sure that the trailers can transport heavy duty equipment in diverse environments in a stable manner. As the vehicles are used worldwide, temperatures range from freezing tundras to scorching deserts with roads differing from highways to debris rich provincial roads.

The purpose of redesign is to develop a casting, a rocker arm, that has a cost reduction in respect to the current welded component, while keeping the performance and other parameters equal or better.



17%

Weight reduction

From 53 kg in S690MC to 44 kg in ADI



32%

Cost reduction

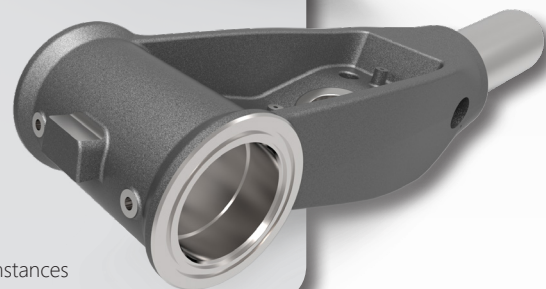
Saving costs by change of material and weight



100%

Interchangeable

Interchangeable with original part, ready for use in rough circumstances



Visit our website at www.edscasting.com or send us your request on info@edsinnovation.com

All rights reserved. This document may be freely shared after formal approval of EDS-Casting & Forging B.V.
The data in this document serves information purposes only, no rights can be derived from the contents of this document.